

innovating the way complex diseases are diagnosed

ISO 13485:2016 ACCREDITED

Do you consider **TICKS** as one of the most dangerous animals in Europe and North America? Worry not! In 2017, Te?ted Oy has introduced a complete diagnostic test kit for tick-borne diseases called TICKPLEX. It tests for the antibodies against multiple microbes, disease stages, and patients simultaneously.

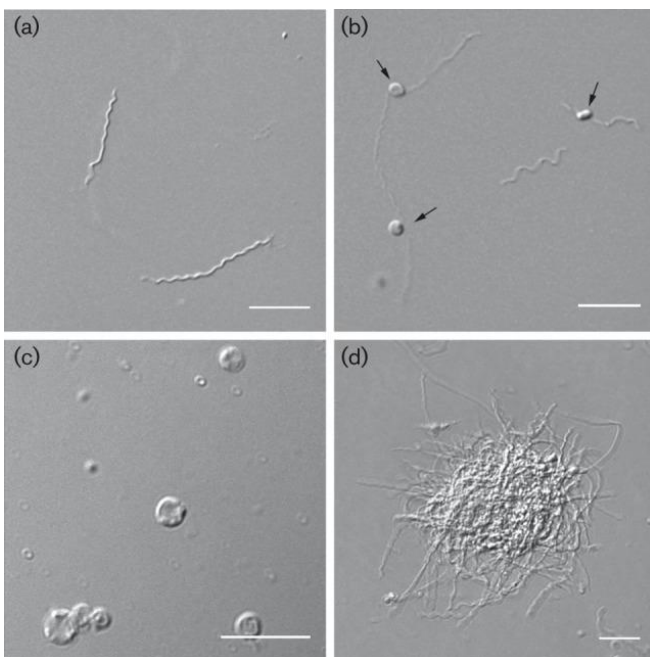
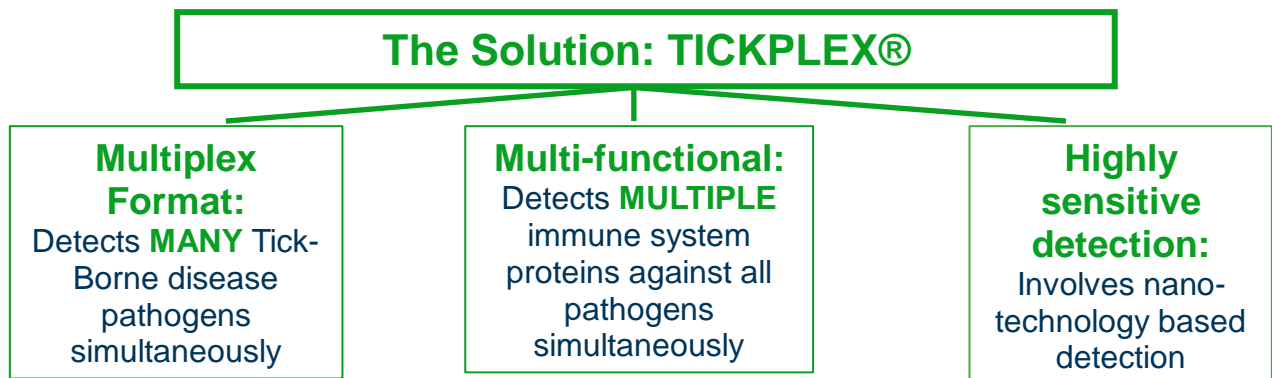


Figure 1.

Typical pleomorphic forms of *B. burgdorferi* B31. Live cell DIC images of *B. burgdorferi* cultures representing (a) spirochaetes, (b) blebs on spirochaetes (black arrows), (c) 10 min H₂O-induced RBs and (d) BFL aggregates. Bars, 10 µm.

[Morphological and biochemical features of *Borrelia burgdorferi* pleomorphic forms](#)

Microbiology. 2015 Mar;161(Pt 3):516-527.

Benefits for hospitals and patients:

- **Significant reduction** in cost for hospitals, clinics and patients
- **1 visit** required for 1 proper diagnosis

Validation Study: 1100 patients were tested again 20 individual antigens

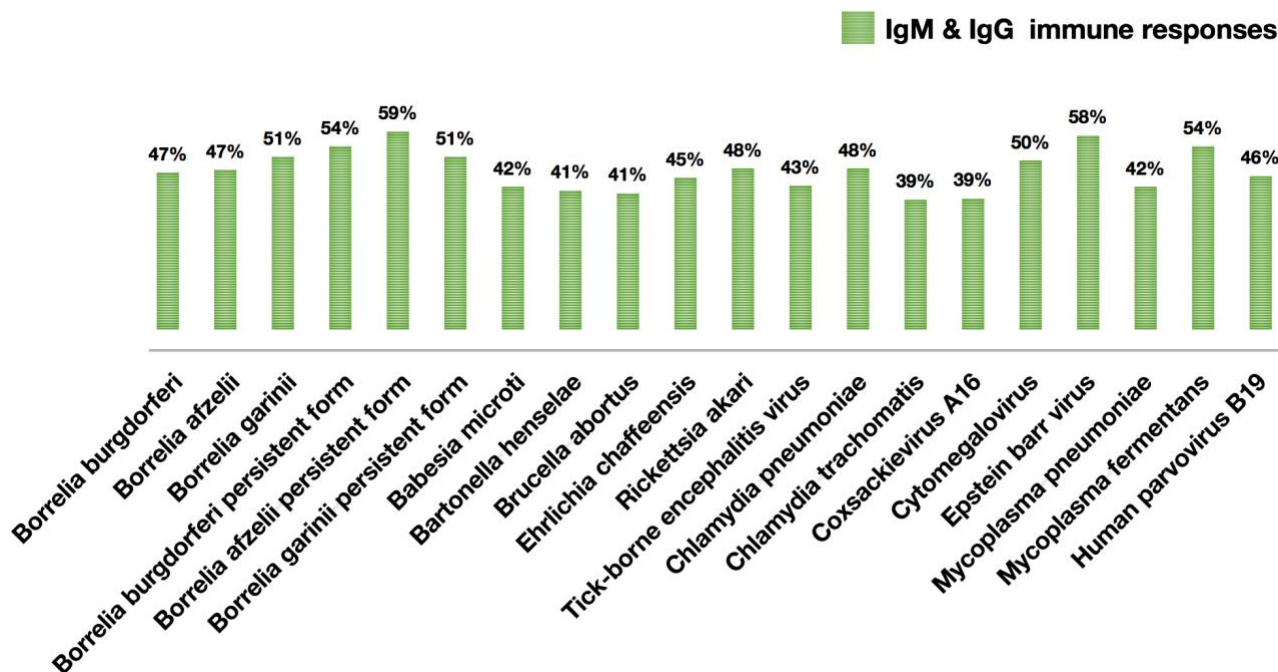


Figure 2. Overall IgM and IgG positive immune responses to 20 individual antigens by patients suggest that immune responses by Lyme symptomatic patients is not limited to only native forms of *Borrelia* (*Borrelia burgdorferi*, *Borrelia afzelii*, and *Borrelia garinii*).



TICKPLEX® PREMIUM COMING SOON!!!!

TICKPLEX® PLUS test provides a quantitative and qualitative in vitro assay for human IgM and IgG antibodies against *Borrelia afzelii*, *Borrelia burgdorferi*, and *Borrelia garinii* infections. The test includes persistent antigens of the different borrelia species.

Tests for co-infections (*Babesia*, *Bartonella*, *Ehrlichia*, *Rickettsia*), and opportunistic infections (*Coxsackievirus*, Epstein-Barr virus, Human parvovirus B19, *Mycoplasma fermentans* and *Mycoplasma pneumoniae*) associated with tick-borne diseases.

TICKPLEX® BASIC test provides a quantitative and qualitative in vitro assay for human IgM and IgG antibodies against *Borrelia burgdorferi*, *Borrelia afzelii*, and *Borrelia garinii* infections. The test includes persistent antigens of the different borrelia species.